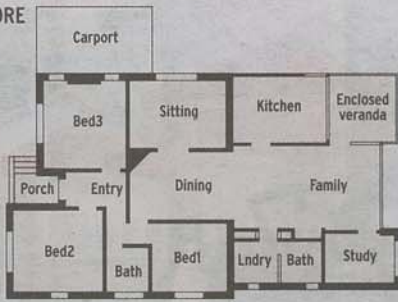


BEFORE



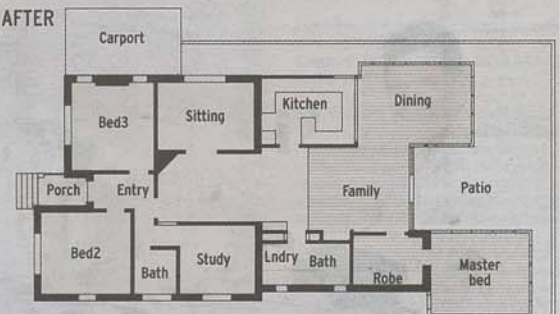
PHOTOGRAPHY: SIMON ALEKNA



Fresh approach

Original floorboards were stripped and the walls painted white to illuminate the open-plan living areas. Part of the wall between the kitchen and the original veranda was removed to create a kitchen servery (left). A quick kitchen makeover helped cut costs. New doors were fitted to old units and fresh splashbacks and CaesarStone benchtops installed.

AFTER



Considering the tight budget, the house has undergone a suitably dramatic change. Beside the newly opened-up kitchen, a dingy, dark brown, covered veranda, enclosed with flywire, was demolished to make way for an airy dining room. Meanwhile, heavy, pine panels were removed from the adjoining living room ceiling to enlarge and lighten it. "That room never worked and the television always stuck out in the way," says Cassandra, who had a nearby linen cupboard transformed into an entertainment unit.

Her favourite spaces, however, are the new, north-facing bedroom and patio. "Everywhere you look, you can see treescapes," she says. "Before everyone used to squish inside but we've just had a great party for the festival community. The new outdoor room was the perfect place to weld the team together."

Contact HOLMAN HOME DESIGN, 0427 632 765

PERFECT SUMMER RETREAT



Nordic - Loom Lounge Chair

Our Nordic all weather 3 seater lounge is the perfect place to retire to this summer. Our Summer collection features all-weather cushions, fully guaranteed fade resistant outdoor/indoor loom in a raft of brilliant and subtle designer colours. Visit our showroom or web site to fully appreciate how you can make the most of your outdoor living this summer. **Available for Christmas delivery.**



REAL CHRISTMAS TREES - 100% PROCEEDS TO CHILDRENS CHARITY

SHOWROOM OPEN 7 DAYS Mon-Fri: 9am-5pm, Weekends: 10am-5pm. 28 Dickson Avenue Artarmon
www.dicksonavenue.com.au Phone: 9439 9399. Commercial enquiries welcome. 3 Year guarantee on all products.

